

JAMES  
**latham**  
THE NATURAL CHOICE

**garnica**

Challenge the ordinary

THE FINEST  
PLYWOOD FOR  
THE MOST  
DEMANDING  
CLIENTS







**garnica**  
Challenge the ordinary

# THE FINEST PLYWOOD FOR THE MOST DEMANDING CLIENTS

**As the country's biggest independent nationwide distributor of panel products and timber, James Latham is delighted to present the latest addition to its portfolio, Poplar Plywood.**

Responsibly sourced and ethically verified, this range of plywood is exclusive to James Latham in the UK and offers excellent performance properties. Very lightweight, strong and exceptionally stable, Poplar Plywood is suitable for both interior and exterior applications and is particularly well suited for the manufacturing of furniture, caravans, partitions, speakers, boats or exhibition stands, in fact, anywhere that weight may be an issue.



# EFFICIENCY POPLAR

## 100% POPLAR PLYWOOD

Panel with core and faces made of poplar from controlled and sustainable European plantations. It has many applications thanks to its excellent attributes.

All products of the 'Efficiency' family stand out for their exceptional properties: lightweight, surface quality, easy-to-machine and easy-to-transport, thanks to their poplar cores and faces.

**Glue type:** EN 314 - 2 1993: Class 2.\*

**Emission:** E1, EN 13986.

This product can be made on demand to the ARB standards (low formaldehyde emissions).

**Grades:** B/BB.

**Properties:** Lightweight / Light-colour / Easy-to-machine

### Applications/Uses

- Decorative coverings for walls, ceilings, facades, interior partitions, panelling...
- Semi-structural uses in roof panelling, sandwich panels
- Furniture industry
- Toys, marquetry, DIY...

### Formats

<b>Dimensions mm</b>	2440x1220, 3100x1220, 3100x1530, (2520x1850 & 3100x1850 available to special order)									
<b>Thickness mm</b>	4	6	9	12	15	18	22	25	30	
<b>N° of plies</b>	5	5	5	7	7	7/9	9	11	13	

### Technical features

	Values	Standard
Density (Kg/m <sup>3</sup> )	420-480	UNE EN 323
MOE - Modulus of elasticity (N/mm <sup>2</sup> )	3.500-4.800	UNE EN 310
Face Screw Holding (kgf)	135	UNE EN 320
Moisture content (%)	6-14	UNE EN 322

**Finishes available:** UV, HPL, MDO, PRIM, XPS, CRK



# DURAPLY

## 100% DURABLE MODIFIED PLYWOOD

Panel with exceptional durable properties due to an innovative ply to ply treatment. Fungi and insect resistant, even under the most adverse weather conditions.

Panel with core and faces made of poplar from controlled and sustainable European plantations. Lightweight, surface quality, easy-to-machine and easy-to-transport.

**Glue type:** EN 314 - 2 1993: Class 3.\*

**Emission:** E1, EN 13986.

**Grades:** BB/BB

### Applications/Uses

Perfect for external applications: sandwich panels, light lattice construction, advertising panels, message signs/panels, facades, roof supports, ledges, gardening, parks, recreational areas, street furniture, etc.

### Formats

<b>Dimensions mm</b>	2440x1220, 3100x1530									
<b>Thickness mm</b>	4	6	9	12	15	18	22	25	30	
<b>N° of plies</b>	5	7	7	9	9	11	13	-	-	

### Technical features

	Values	Standard
Density (Kg/m <sup>3</sup> )	440-500	UNE EN 323
MOE - Modulus of elasticity (N/mm <sup>2</sup> )	3.400-4.700	UNE EN 310
Face Screw Holding (kgf)	135	UNE EN 320
Moisture content (%)	3-14	UNE EN 322

**Finishes available:** UV, HPL, MDO, PRM, XPS



## FIRESHIELD

### EURO CLASS B FIRE-RATED MODIFIED PLYWOOD B-s1-d0

Panel modified through an innovative ply-to-ply process that gives it exceptional flame retardant properties. Unlike other treatments, its properties remain intact when working or sanding the panel. Cores and faces made of poplar from controlled and sustainable European plantations. Lightweight, surface quality, easy-to-machine and easy-to-transport.

**Glue type:** EN 314 - 2 1993: Class 1.\*

**Emission:** E1, EN 13986.

This product can be made on demand to ARB standards (low formaldehyde emissions).

**Grades:** B/BB.

#### Applications/Uses

The specifications have been designed to be used in public places, trains, boats, furniture and construction or decorative elements. This product meets the current regulations in force. It is classified as B-s1-d0, enabling this material for building and construction use. In addition, it has been tested obtaining the following classifications:

- Class M1, NF P 92-501:1995 (French standard)
- Class F1, NF F 16-101 (French standard)
- B-s1-d0, EN 13501
- \*B-s2 d0, EN 13501 (see \*5mm)

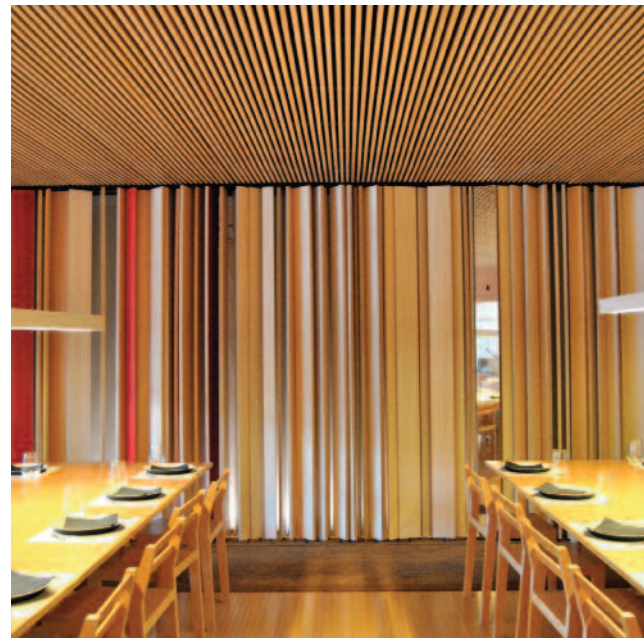
#### Formats

<b>Dimensions mm</b>	2440x1220, 3100x1530
<b>Thickness mm</b>	*5 9 12 15 18 22 25 30

#### Technical features

	Values	Standard
Density (Kg/m <sup>3</sup> )	440-500	UNE EN 323
MOE - Modulus of elasticity (N/mm <sup>2</sup> )	3.400-4.700	UNE EN 310
Face Screw Holding (kgf)	135	UNE EN 320
Moisture content (%)	6-14	UNE EN 322

**Finishes available:** UV, HPL



## ELEGANCE BIRCH

### BIRCH FACED POPLAR CORE PLYWOOD

Poplar panel covered with decorative birch veneer. All products in the 'Elegance' range are particularly noted for the beauty of their faces and for their exceptional properties: lightweight, surface quality, easy-to-machine and easy-to-transport.

**Glue type:** EN 314 - 2 1993: Class 1.\*

**Emission:** E1, EN 13986.

This product can be made on demand to ARB standards (low formaldehyde emissions).

**Grades:** B/BB

#### Applications/Uses

- Decorative coverings for walls, ceilings, facades, interior partitions, dry wall...
- Furniture industry

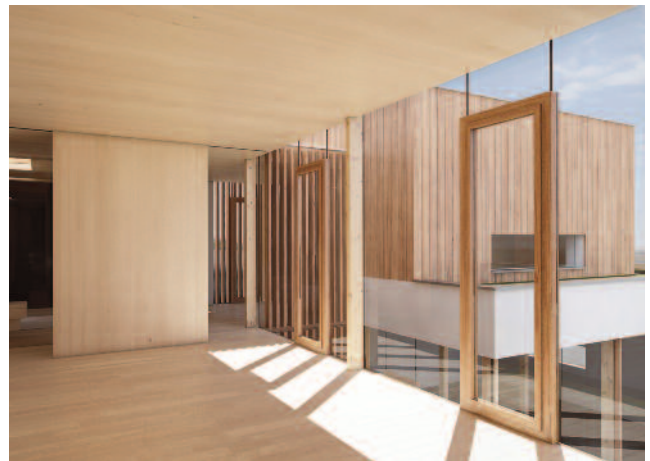
#### Formats

<b>Dimensions mm</b>	2440x1220, 3050x1220							
<b>Thickness mm</b>	6	9	12	15	18	22	25	30
<b>N° of plies</b>	5	5	7	7	9	9	11	13

#### Technical features

	Values	Standard
Density (Kg/m <sup>3</sup> )	440-490	UNE EN 323
MOE - Modulus of elasticity (N/mm <sup>2</sup> )	3800-5000	UNE EN 310
Face Screw Holding (kgf)	135	UNE EN 320
Moisture content (%)	6-14	UNE EN 322

Finish available: UV



# James Latham Distribution Sites and Offices

## 1 James Latham Dudley ●●

T: 01384 234444  
F: 01384 233121  
E-mail: panels.dudley@lathams.co.uk  
timber.dudley@lathams.co.uk

## 2 James Latham Fareham ●●

T: 01329 854800  
F: 01329 849585  
E-mail: panels.fareham@lathams.co.uk  
timber.fareham@lathams.co.uk

## 3 James Latham Gateshead ●●

T: 0191 469 4211  
F: 0191 469 2615  
E-mail: panels.gateshead@lathams.co.uk  
timber.gateshead@lathams.co.uk

## 4 James Latham Leeds ●●

T: 0113 387 0830  
F: 0113 387 0855  
E-mail: leeds@lathams.co.uk

## 4 ATP (Advanced Technical Panels) ●●

T: 0113 387 0850  
F: 0113 387 0855  
E-mail: atp@lathams.co.uk

## 5 James Latham Scotland ●●

T: 01698 838777  
F: 01698 831452  
Email: scotland@lathams.co.uk

## 6 James Latham Wigston ●●

T: 0116 288 9161  
F: 0116 281 3806  
E-mail: panels.wigston@lathams.co.uk  
timber.wigston@lathams.co.uk

## 7 James Latham Yate ●●

T: 01454 315421  
F: 01454 323488  
E-mail: panels.yate@lathams.co.uk  
timber.yate@lathams.co.uk

## 8 James Latham Hemel Hempstead ●●

T: 01442 849000  
F: 01442 239287  
E-mail: panels.hemel@lathams.co.uk

## 9 James Latham Thurrock ●●

T: 01708 869800  
F: 01708 860900  
E-mail: panels.thurrock@lathams.co.uk

## 10 James Latham Purfleet ●●

T: 01708 864477  
F: 01708 862727  
E-mail: timber.purfleet@lathams.co.uk

## 11 James Latham - BDC Showroom ●●

Suite 301, Business Design Centre,  
52 Upper Street, Islington, N1 0QH  
T: 020 7288 6417  
E-mail: BDC@lathams.co.uk

## Distribution facilities



1 Port Of Tilbury

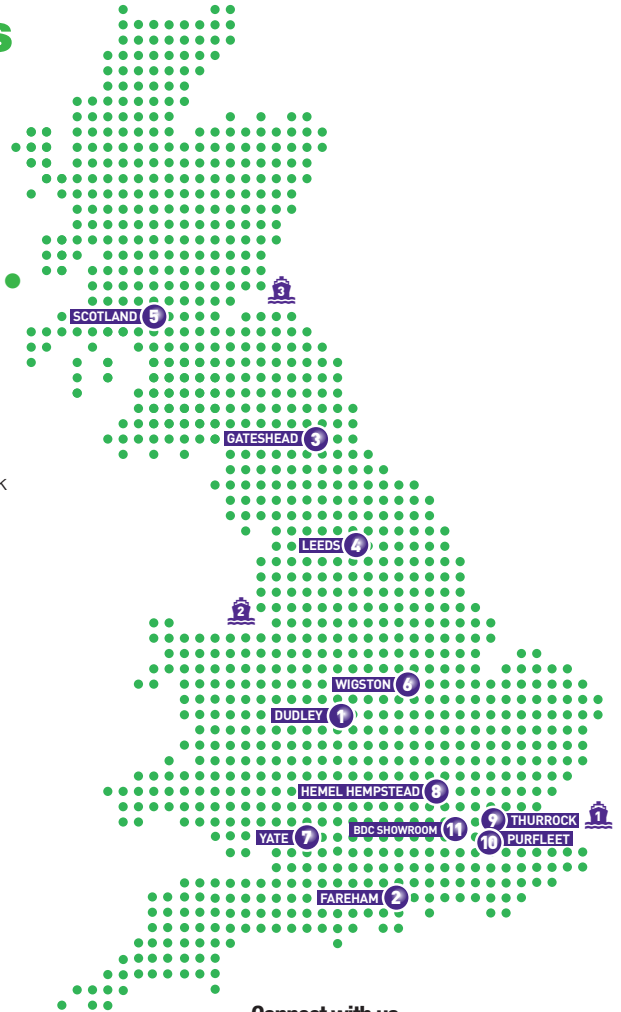


2 Port of Liverpool



3 Port of Grangemouth

KEY: ● PANEL PRODUCTS ● TIMBER PRODUCTS



## Connect with us



[www.lathamtimber.co.uk](http://www.lathamtimber.co.uk)



[twitter.com/lathamsltd](https://twitter.com/lathamsltd)



[www.facebook.com/lathamsltd](https://www.facebook.com/lathamsltd)



[uk.pinterest.com/LathamsLtd](https://uk.pinterest.com/LathamsLtd)

\* This European standard specifies requirements for bonding classes of veneer plywood according to their end uses. Bonding quality is divided into three classes: Class 1: dry conditions, Class 2: Humid conditions, and Class 3: exterior conditions. These bonding classes are linked to the 3 service classes in EN 636 and in EN 335.



Call **0116 257 3415**  
email [marketing@lathams.co.uk](mailto:marketing@lathams.co.uk)  
or visit [www.lathamtimber.co.uk](http://www.lathamtimber.co.uk)

